

# PROBABILITY

## A DEFINITION

### A.1 FINDING PROBABILITY

**MCQ 1:** What is the chance of riding a dinosaur?



Choose one answer:

- ☐ Impossible
- ☐ Less Likely
- ☐ Even Chance
- ☐ Most Likely
- ☐ Certain

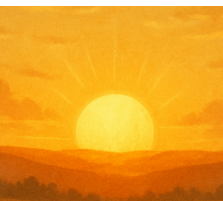
**MCQ 2:** What is the chance of drinking water today?



Choose one answer:

- ☐ Impossible
- ☐ Less Likely
- ☐ Even Chance
- ☐ Most Likely
- ☐ Certain

**MCQ 3:** What is the chance of the sun rising tomorrow morning?



Choose one answer:

- ☐ Impossible

- ☐ Less Likely
- ☐ Even Chance
- ☐ Most Likely
- ☐ Certain

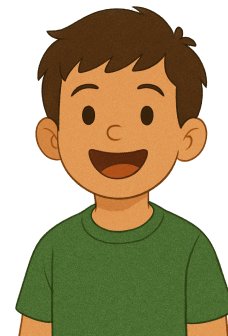
**MCQ 4:** What is the chance of flying to Mars?



Choose one answer:

- ☐ Impossible
- ☐ Less Likely
- ☐ Even Chance
- ☐ Most Likely
- ☐ Certain

**MCQ 5:** What is the chance of smiling at school today?



Choose one answer:

- ☐ Impossible
- ☐ Less Likely
- ☐ Even Chance
- ☐ Most Likely
- ☐ Certain

**MCQ 6:** What is the chance of tossing a coin and getting heads?



Choose one answer:

- ☐ Impossible

- ☐ Less Likely
- ☐ Even Chance
- ☐ Most Likely
- ☐ Certain

**MCQ 7:** What is the chance of a music star coming to school today?



Choose one answer:

- ☐ Impossible
- ☐ Less Likely
- ☐ Even Chance
- ☐ Most Likely
- ☐ Certain

**MCQ 8:** What is the chance of a baby born today being a girl?



Choose one answer:

- ☐ Impossible
- ☐ Less Likely
- ☐ Even Chance
- ☐ Most Likely
- ☐ Certain

## A.2 FINDING THE PROBABILITY IN A DRAWING EXPERIMENT

**MCQ 9:** What is the chance of picking a red candy from a bag with 4 red candies and 4 blue candies?



Choose one answer:

- ☐ Impossible
- ☐ Less Likely
- ☐ Even Chance
- ☐ Most Likely
- ☐ Certain

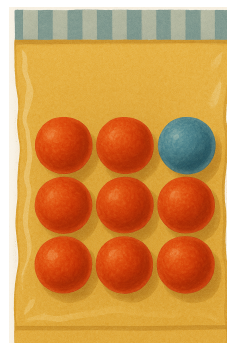
**MCQ 10:** What is the chance of picking a blue candy from a bag with 4 red candies and 4 blue candies?



Choose one answer:

- ☐ Impossible
- ☐ Less Likely
- ☐ Even Chance
- ☐ Most Likely
- ☐ Certain

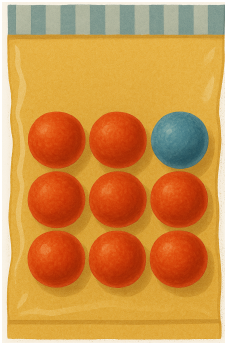
**MCQ 11:** What is the chance of picking a blue candy from a bag with 9 red candies and 1 blue candy?



Choose one answer:

- ☐ Impossible
- ☐ Less Likely
- ☐ Even Chance
- ☐ Most Likely
- ☐ Certain

**MCQ 12:** What is the chance of picking a red candy from a bag with 9 red candies and 1 blue candy?

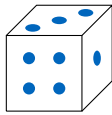


Choose one answer:

- ☐ Impossible
- ☐ Less Likely
- ☐ Even Chance
- ☐ Most Likely
- ☐ Certain

### A.3 FINDING THE PROBABILITY IN A DICE EXPERIMENT

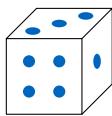
**MCQ 13:** What is the chance of getting a 3 when you roll a die?



Choose one answer:

- ☐ Impossible
- ☐ Less Likely
- ☐ Even Chance
- ☐ Most Likely
- ☐ Certain

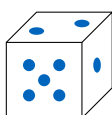
**MCQ 14:** What is the chance of **not** getting a 3 when you roll a die?



Choose one answer:

- ☐ Impossible
- ☐ Less Likely
- ☐ Even Chance
- ☐ Most Likely
- ☐ Certain

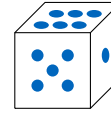
**MCQ 15:** What is the chance of getting an even number (2, 4, or 6) when you roll a die?



Choose one answer:

- ☐ Impossible
- ☐ Less Likely
- ☐ Even Chance
- ☐ Most Likely
- ☐ Certain

**MCQ 16:** What is the chance of getting a 7 when you roll a die?



Choose one answer:

- ☐ Impossible
- ☐ Less Likely
- ☐ Even Chance
- ☐ Most Likely
- ☐ Certain